

Download TUYA SMART App



Download TUYA SMART APP

Motorized curtain track system  
Motorized curtain track system



TUYA SMART TUYA SMART

Smart life smart enjoy

Smart life smart enjoy

This product matches TUYA smart system, please  
download TUYA smart app.

This product matches TUYA smart system  
please download TUYA smart app

SMART CONTROL MANUAL ○

SMART CONTROL MANUAL

MOBILE APP •  
MOBILE APP

SMART SPEAKER  
SMART SPEAKER

# Motorized curtain track system

Start your intellectual life



Start your intellectual life



WIFI



Smooth running



radio control



manual start



large load



easy installation

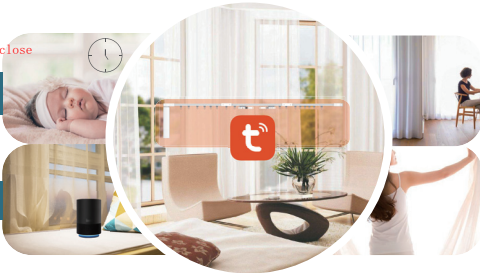


high quality

This product matches TUYA smart system, please download TUYA smart app when operate.  
This product matches TUYA smart system, please download TUYA smart app when operate.

Timing control of curtain open and close

1 Timing control of curtain open and close



Support mobile phone remote control

2 Support mobile phone remote control

3 Can match multiple smart speakers

Can match multiple smart speakers

4 Custom scene designs

Custom scene designs

## 1 Motor connected to network

### Connection conditions

1. Install TUYA SMART APP

1. Install TUYA SMART APP

Search for "TUYA SMART" in the mobile phone application market or scan the QR code below to download the app application. Follow the prompts to register an account



2. Prepare a motorized curtain product kit

2. Prepare a motorized curtain product kit

3. WIFI connection

3. WIFI connection



NOTE: Choose the 2.4G WIFI nearest to curtain, without Chinese characters in its name.

NOTE: Choose the 2.4G wifi nearest to curtain, without Chinese characters in its name

### APP instruction

APP instruction  
Take the iOS users as an example, Android is similar.  
Take the iOS users as an example, Android is similar

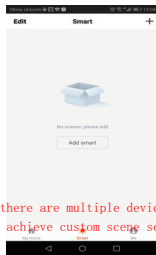
After registering account, you will see 3 pages according to the 4 selections of home page.

After registering account, you will see 4 pages according to the 4 selections of home page

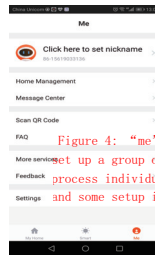


Figure 2: "Smart" page, add intelligent scene, when there are multiple devices, you can set a key trigger to achieve custom scene settings;

(1)



(2)



(3)

Figure 1: The main interface: "My Home" in the menu you can add the family through the upper left corner, add devices in the upper right corner "+", below is the weather, room settings, and add equipment bar

Figure 1: The main interface: "My Home", in the menu you can add the family through the upper left corner, add devices in the upper right corner "+", below is the weather, room settings, and add equipment bar

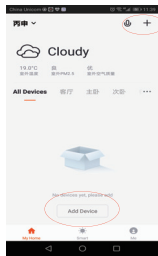
Figure 2: "Smart" page, add intelligent scene, when there are multiple devices, you can set a key trigger to achieve custom scene settings;

you can see the devices that the TUYA app can control

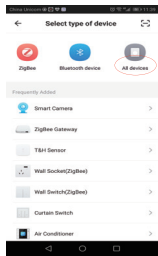
1

Figure 3: "me", you can modify personal information, set up a group or family, view past information, process individual orders, FAQs, feedback, and some set up information.

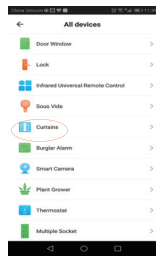
# Connection instruction



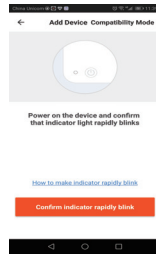
1



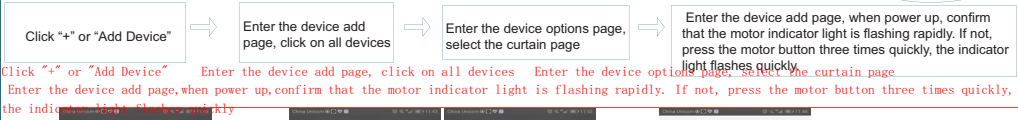
2



3



If the motor indicator light is not flashing rapidly, press the motor button three times quickly, the indicator light flashes quickly.

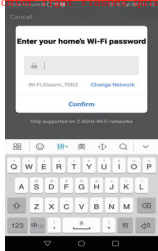


Click "+" or "Add Device"

Enter the device add page, click on all devices

Enter the device options page, select the curtain page

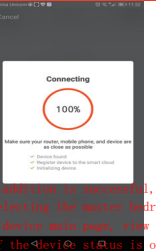
Enter the device add page, when power up, confirm that the motor indicator light is flashing rapidly. If not, press the motor button three times quickly, the indicator light flashes quickly.



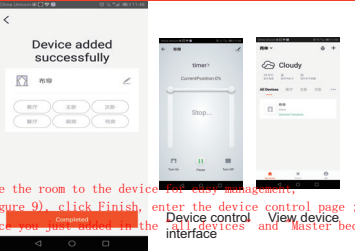
4



5



6

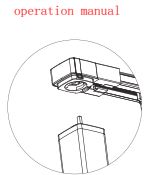


Enter the WIFI password and click "confirm" (Choose the 2.4G WIFI nearest to curtain, without Chinese characters in its name) WIFI name cannot have Chinese characters, WIFI is 2.4G

During the distribution process, the motor indicator flashes quickly, then flashes slowly, finally lights up. After the distribution on network is successfully, the indicator light goes out, and the APP prompts the distribution network successfully.

After the addition is successful, allocate the room to the device for easy management, such as selecting the master bedroom, click finish, enter the device control page; view the device you just added in the "all devices" and "Master bedroom" to see if the device status is offline.

## Operation manual

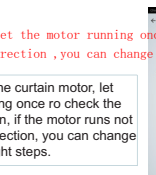


Install the motor, open APP, install the motor, open APP



after installed the curtain motor, let the motor running once to check the running direction, if the motor runs of the opposite direction, you can change following the right steps

me-all-curtain, click curtain



After installed the curtain motor, let the motor running once to check the running direction, if the motor runs not the opposite direction, you can change following the right steps.

Long press the "pause" of APP page



Direction changed

"open" is open the curtain, "Pause" is stop curtain running, "close" is close "Timer" is used to set the open and close time, you can also set by sliding the curtain progress bar in the page.

In addition, you can change by remote (sulation details please read manual)



Equipment details: click the up right signal of picture 10, go into equipment details menu, you can edit the device name; set the position of device, here are the third device control available, you can use to match with other controls; you can remove or delete devices and so on. After removing a device, you need to connect network again if you want to add.

Equipment details: click the up right signal of picture 10, go into equipment details menu, you can edit the device name; set the position of device; here are the third device control available, you can use to match with other controls; you can remove or delete devices and so on. After removing a device, you need to connect network again if you want to add.

Change network: you need to connect to network, gain by "add device" if change it

# 3 Smart speaker control

Smart speaker control

Before operating this part, please confirm TUYA has added device and has been connected to WIFI successfully.

Before operating this part ,please confirm TUYA has added device and has been connected to WIFI successfully

## TMALL VOICE CONTROL

TMALL VOICE CONTROL

1. TUYA smart APP added device successfully;
2. Download TMALL APP;
3. Have Tmall smart speaker

WIFI is 2.4G, and without Chinese character in it



### Operation conditions

1. TUYA smart APP added device successfully
2. Download TMALL APP
3. Have Tmall smart speaker
4. WIFI is 2.4G, and without Chinese character in it

Operation conditions

### Operation manual

After power up, connect WIFI.



Open Tmall APP, choose "me" add device", click "connect internet"



Select the wifi you want, input password click next



When this page appears, long press the "Mute" button until the bottom white light starts to flash click "entered the distribution mode, next step", when enter device match page.



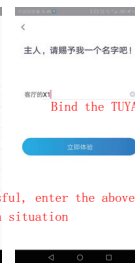
Open Tmall APP, choose "me"- "add device", click "connect internet"

Select the wifi you want, input password click next.

When this page appear long press the "Mute" button until the bottom white light starts to flash, click "entered the distribution mode, next step" when enter device match page.



when matching device is successful, enter the above page, set to the page prompts and your own situation



Bind the TUYA account to Tmall speaker



Click "+" (on the right of "add smart devices" in "my" page)



Enter add devices "me", choose TUYA SMART", then click "Bind an account" and input an already registered account, click "Authorise" according prompt. Then Tmall smart speaker can control the devices we added.



Enter add device page, choose "TUYA SMART", then click "bind an account" add input an already registered account, click "Authorise" according prompt. Then Tmall smart speaker can control the devices we added.



click "+" (on the right of "add smart devices" in "my" page)

TMALL does not recognize custom names, only display device category. TMALL does not recognize custom names, only display device category. Please set the device category before usage.

Click the devices you need to set in "me" page, enter device details, chooses device name, enter smart home set, select the device position, then you can control the device added in TUYA SMART app by voice.



Click the devices you need to set in "me" page, enter device details, chooses device name, enter smart home set, select the device position, then you can control the device added in TUYA SMART app by voice



NOTE: After binding the TUYA account, the devices you added in TUYA will be shown in the "me" page.

NOTE: After binding the TUYA account, the devices you added in TUYA will be shown in the "me" page.



## ROKID VOICE CONTROL

Rokid voice control

Take Rokid yueshi speaker as an example.

### Operation conditions

Operation conditions

1. TUYA smart APP added device successfully;
2. Download Rokid APP
3. Have yueshi smart speaker ;
4. WIFI is 2.4G, and without Chinese character in it



### Operation manual

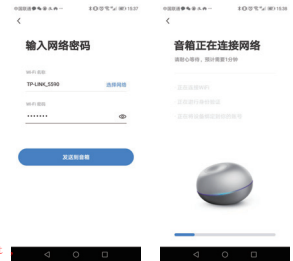
Operation manual

Please make sure the devices power up and connected to wifi.



Open Rokid APP, after logging in the account, the above page appears, long press the "o" button on the top of speaker, blue light, double click "o" button, orange light, now you will hear the tone, click "heard tone" on page.

NOTE: If failed, double click "o" button again, re-connect. Other problems can be forced to restart by long press the "o" button.



Open Rokid APP, after logging in the account, the above page appears, long press the "o" button on the top of speaker, blue light, double click "o" button, orange light now you will hear the tone, click "heard tone" on page.

Note: If failed, double click "o" button again, re-connect .

When connected successfully, Rokid set finished.

Other problems can be forced to restart by long press the "o" button

when connected successfully, Rokid set finished.

### Bind TUYA smart account

Bind TUYA SMART ACCOUNT



Exit the page after finish, when enter the family page again, you will find the added devices, then you can control by voice (speaker).

Find "family" selection at the bottom of APP page click "+" in the right up corner.

Chooses TUYA SMART, bind account according prompt.

Chooses TUYA SMART, bind account according prompt.

click "+" in the right up corner.

Exit the page after finish, when enter the family page again, you will find the added devices, then you can control by voice (speaker).

## DINGDONG VOICE CONTROL

Dingdong voice control

Take Dingdong smart speaker as an example.

### Operation conditions

Operation conditions

1. TUYA smart APP added device successfully;
2. Download Dingdong APP;
3. Have Dingdong smart speaker ;
4. WIFI is 2.4G, and without Chinese character in it

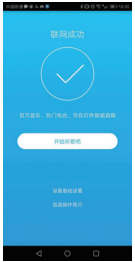


### Operation manual

Operation manual

Please make sure that Dingdong smart speaker has been powered up, and connected to wifi.

Please make sure that Dingdong smart speaker has been powered up, and connected to wifi



Logging the account of Dingdong App, select the device to add.

Login the account of dingdong APP, select the device to add

Input the wifi password, click "next", long press the button on the top of speaker 3 seconds until the purple light rotate, click "connect internet", go on according to the prompt, then click "sing songs" to enter home page, then set successfully.

Input the wifi password, next, long press the button on the top of speaker 3 seconds until the purple light rotate, click "connect internet", go on according to the prompt, then click "sing songs" to enter home page, then set successfully.

### Bind TUYA smart account

TUYA account



Click "application market" in home page.

Search for TUYA SMART and select it.

Click "authorise", bind account according to prompt. Check the binded application in "application market" - "my", select "TUYA SMART", then operate according to tone to achieve the voice control.

Click "application market" in home page

search for TUYA SMART and select it

click "authorise", bind account according to prompt. check the binded application in "application market"-"my", select "TUYA SMART", then operate according to tone to achieve the voice control.

## XIAODU VOICE CONTROL

Take Xiaodu smart speaker as an example.

### Operation conditions

1. TUYA smart APP added device successfully
2. Download Xiaodu speaker APP: <https://www.tuya.com/voice-control> ;
3. Have Xiaodu smart speaker
4. WIFI is 2.4G, and without Chinese character in it

1. TUYA smart APP added device successfully

2. Download xiaodu speaker APP:

<https://www.tuya.com/voice-control> ;

3. WIFI is 2.4G, and without Chinese character in it



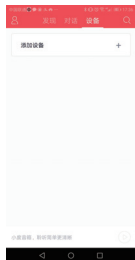
Xiaodu speaker



Operation conditions

### Operation manual

Please make sure that xiaodu smart speaker has been powered up, and connected to wifi.



Open APP, after logging in, enter home page, click the device.

Click "+", select the device

Long press the button on top, orange indicator lights, click "continue", when speaker appear on page, click "continue".

Open APP, after logging in, enter home page, click the device

Long press the button on top, orange indicator lights, click "continue", when speaker appear on page, continue



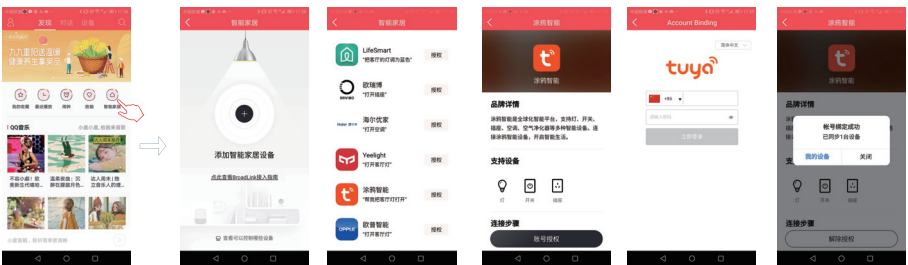
Input wifi password, click start match, please wait until successful.

You can check the added device in "device" on home page.

Input wifi password, click start match, please wait until successful

You can check the added devices in "device" on home page

### Bind TUYA smart account : SMART account



Click the "smart home" on the right of "find" page on the right of "find" page

Click "+", find TUYA SMART on "smart home" page, click authorize, select and input account according to prompts. Bind successfully when finish.

Click "+", find TUYA SMART on "smart home" page, click authorize, select and input account according to prompts. Bind successfully when finish .



You can check the added device on "smart home" page, and the device by TUYA SMART will appear in page, custom can control devices by voice, say "Xiaodu Xiaodu, open the curtain".

You can check the added devices on "Smart home" page, and the device binded by TUYA SMART will appear in page, customers can control devices by voice, say 'xiaodu xiaodu, open the curtain'.

### TENCENT YUNXIAOWEI VOICE CONTROL

Operation conditions

1. TUYA smart APP added device successfully;
2. Download yunxiaowei APP;
3. Have Harman/kadon smart speaker ;

Operation conditions

1. TUYA smart APP added device successfully
2. Download Tencent yunxiaowei APP
3. Have Harman/Kadon smart speaker
4. WIFI is 2.4G, and without Chinese character in it



Tencent yunxiaowei



Operation manual

Operation manual

Please make sure that Harman/Kadon smart speaker has been powered up, and connected to wifi.



After scanning, the interface for successful speaker recognition will appear and automatically jump to the WiFi connection interface.



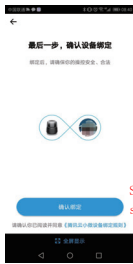
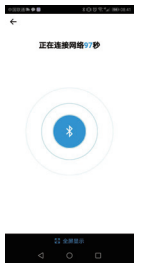
Open APP, after logging in, according to prompts, click "my" on the bottom of the page, then select "add device", you can scan QR code on top of speakers or packaging.

Open APP, after logging in, according to prompts, click "my" on the bottom of the page, then select "add device", you can scan QR code on top of speakers.

After scanning, the interface for successfully speaker recognition will appear and automatically jump to the wifi connection interface.

According to prompt, long press mute button of speaker until the white lights and hear tone prompts, then click "connect internet"

according prompts, long press mute button of speaker until the white lights and hear tone prompts, then click "connect internet"



Start connecting, wait until success, then enter bind page.

Start connecting, wait until success, then enter bind page.



After binding successfully, exit and you can check the binded speaker on "my" page.

After binding successfully, exit and you can check the binded speaker on "my" page

### Bind TUYA smart account, TUYA SMART account



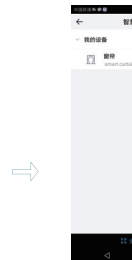
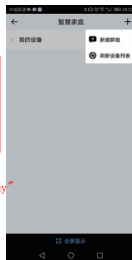
Select "skill" on APP bottom, find and enter TUYA SMART.  
select "skill" on APP bottom, find and enter TUYA SMART

Click "enable", input the TUYA account, then "authorise", after exit, you can check binded TUYA SMART in "skill" "my application" list.  
click "enable", input the TUYA account, then "authorise", after exit, you can check binded TUYA SMART in "skill" "my application"



After binding successfully, select "my" click "smart home", click "+", enter "refresh devices list"

After binding successfully, select "my" click "smart home", click "+", enter "refresh devices list"



Refresh successfully, you can find the devices connected to TUYA, now you can control or start by voice.

refresh successfully, you can find the devices connected to TUYA, now you can control or start by voice "hi, xiaowei, open the curtain".



# AMAZON ECHO VOICE CONTROL

## Operation conditions

1. TUYA smart APP added device successfully
2. Download Amazon Alexa APP
3. Have amazon echo smart speaker
4. WIFI is 2.4G, and without Chinese character in it

1. TUYA smart APP added device successfully;
2. Download Amazon Alexa APP;
3. Have amazon echo smart speaker;



WIFI is 2.4G, and without Chinese character in it

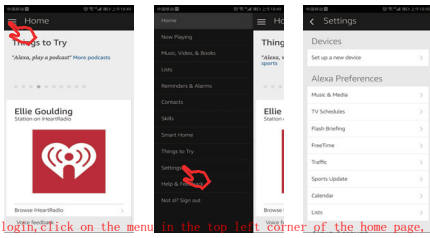
NOTE: Modify the device's name to the words that easily identifiable by Alexa, such as "red light".

## Operation manual

### Operation manual

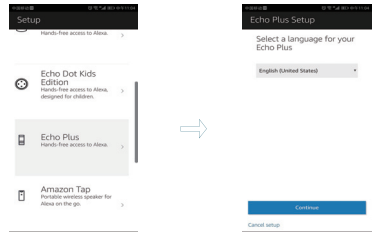
Take the ios users as an example, Android users is similar.

Please make sure that amznz echo smart speaker has been powered up, and connected to wifi.



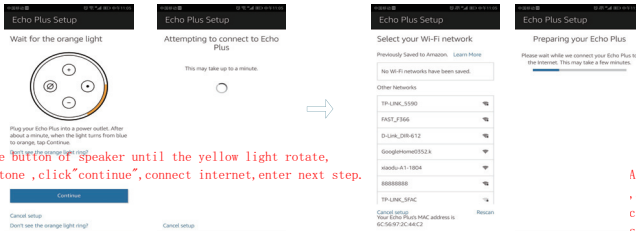
Open APP, log in, click on the menu in the top left corner of the home page, select "setting", click "set up a new device" to set amazon echo.

Open APP, login, click on the menu in the top left corner of the home page, select "setting", click "set up a new device" to set amazon echo.



Select speaker

Select language



long press the button of speaker until the yellow light rotate, and hear the tone , click "continue", connect internet, enter next step.

After connecting to wifi, click "continue" an introduce video appears, when video finishes, click "continue", the page jumps to home page, then set Amazon echo successfully.

After connecting to wifi, click "continue" , an introduce video appears, when video finishes, click "continue", the page jumps to home page, then set Amazon echo successfully.

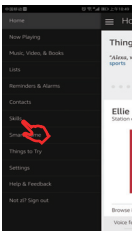
Long press the button of speaker until the yellow light rotate, and hear the tone, click "continue", connect internet, enter next step.

Select the wifi, then wait for Amazon echo connecting to wifi.

Select the wifi, then wait for Amazon echo connecting to wifi

## Bind TUYA smart account

### Bind TUYA SMART account



Then search for TUYA SMART, click "enable"

Input TUYA SMART account, click "link now" to bind your TUYA APP account, then you can start skill, start enjoy your smart home trip.

Input TUYA SMART account , click "link now" to bin your TUYA APP account, then you can start skill, start enjoying your smart home trip.

Click and enter "skill" on App menu click and enter "skill" on APP menu

Then search for TUYA SMART, click "enable"

# GOOGLE HOME VOICE CONTROL

Google home voice control

## Operation conditions

1. TUYA smart APP added device successfully;
2. Download Google Home APP;
3. Have a Google home smart speaker ;
4. WIFI is 2.4G ,and without Chinese character in it



NOTE: Modify the device's name to the words that easily identifiable by Alexa, such as "red light".

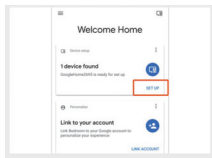
NOTE: Modify the device's name to the words that easily identifiable by Alexa, such as "red light".

## Operation manual

Take the ios users as an example, android users is similar

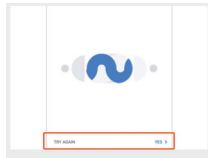
Take the ios users as an example, Android users is similar.

Please make sure that Google home smart speaker has been powered up, and connected to wifi



login google home App, click the "set up" on the top left corner, to set google home.

Login google home APP, click the "set up" on the top left corner, to set google home



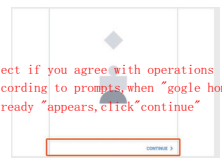
If there is tone prompt, you connected the right device, then click "yes", go into next step.

If there is tone prompt, you connected the right device, then click "yes", go into next step



Allocate the room position for google home, then select wifi and language, click "next" if finish

Allocate the room position for google home, then select wifi and language, click "next" if finish



Select if you agree with operations according to prompts when "google home is ready" appears, click "continue"

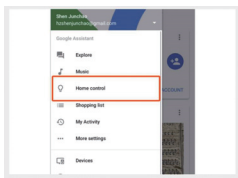
Select if you agree with operations according to prompt, when "google home is ready" appears, click "continue"

When finish, here will be a teach video, after it, click "finish set up", google home set successfully.

When finish, here will be a teach video, after it, click "finish set up", google home set successfully.

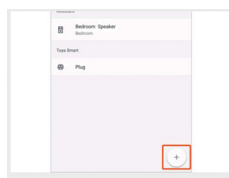
## Bind TUYA smart account

Bind TUYA SMART account



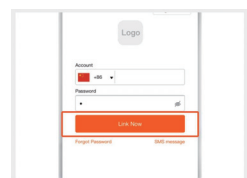
Select "home control" on the left of home page of google home App.

Select "home control" on the left of home page of google home APP



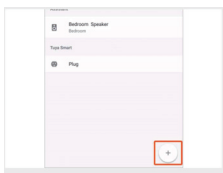
Click "+" on the bottom right corner search for "TUYA SMART"

Click "+" on the bottom right corner search for "TUYA SMART"



Find TUYA SMART, enter it, select the country your TUYA account belongs to, account and password, click "link now".

Find TUYA SMART ,enter it, select the country your TUYA account belongs to ,input account and password,click "link now".



Select which room your device belongs to, then you can find "skill" in the list of "devices" - home control, then you can start your smart home trip.

Select which room your device belongs to, then you can find "skill" in the list of "devices"-Home control, then you can start your smart home trip

# WARRANTY CARD

Provide warranty depending on this card, please keep it.

## \*User Profiles

User Name		Gender		Age	
Contact Address					
Contact Number			Post Code		
Purchase Time & Site					
Purchase Price			Sales Order		
Description & Specification			Motor Number		
Distributor signature			User Signature		

## \*Warranty Clauses:

- Users could replace the same type of commodity under the circumstances of there are performance breakdown but the commodity itself and outer packaging is intact ,without scratches and the period should be in three months from the date of goods are sold.(After inspection ,the breakdown should not due to artificial damage.).
- The warranty of motor is 3 years at the moment it is sold ,and lifelong maintenance.Accessories are not included.
- The warranty is only useful in the condition of normal use.
- All artificial damage ,including disassembly oneself, tear down the seal,improper operation are not included in warranty.
- Please provide this card when do WARRANTY ,our company has the right to refuse user's warranty service without providing this card or tamper the card.



---

# Motorized curtain track system